



Third Party Attachments to Horizon Power Assets

Standard Number: HPC-11NH-18-0001-2011

Document Control		
Original Author	Name: Justin Murphy Position: Manager Asset Management Support	
This Revision Author	Name: Adrian Barnes Position: Senior Standards Engineer	
This Revision Review	Name: Dieter Mendoza Position: Engineering Services Manager / Principal Engineer	
Document Owner <i>(May also be the Process Owner)</i>	Name: Adrian Barnes Position: Senior Standards Engineer	
Approved By	Name: Marc Beckx Position: Manager Engineering and Project Services	
Date Created/Last Updated	March 2017	
Review Frequency *	5 years	
Next Review Date	March 2022	

* Frequency period is dependent upon circumstances– maximum is 5 years from last issue, review, or revision whichever is the latest. If left blank, the default must be 1 year unless otherwise specified.

Revision Control		
Revision	Date	Description
1	09/03/2011	Approved for use and issued to business
2	22/06/2016	Updated format
3	30/03/2017	Amended to allow Electrical Attachments

STAKEHOLDERS	
<i>The following positions must be consulted if an update or review is required:</i>	
Asset Managers	Strategic Asset Management Consultant
Manager Health and Safety	

TABLE OF CONTENTS

1	Purpose	5
2	Application	5
3	Definitions	6
3.1	General	6
3.2	Abbreviations.....	8
3.3	References	9
3.4	Interpretation	9
4	Safety and work Skills	10
4.1	General	10
4.2	Qualifications requirements	10
4.3	Compliance with acts, codes and standards	10
5	Process.....	11
6	General requirements.....	12
6.1	General requirements.....	12
6.2	Recommended pole types	14
6.3	Steel lattice towers	14
6.4	Transmission poles.....	14
6.5	Reinforced and condemned assets.....	15
6.6	Aerial equipment poles	15
6.7	Other pole types	16
6.8	Other approvals.....	17
6.9	Enclosures kiosks/MPS/RMUs	17
7	Decorative fixtures.....	17
7.1	General requirements.....	17
7.2	Modifications - signage	18
7.3	Other signs - wooden poles:	18
7.4	Other signs – steel street light columns:	19
7.5	Pole to pole banners.....	19
8	Electrical attachments.....	19
8.1	General	19
8.2	Location.....	19
8.3	Poles	19

8.4	Physical mounting	19
8.5	Electrical isolation and protection	19
8.6	Device class	20
8.7	Wiring	20
8.8	Wiring conduit.....	20
8.9	Stored energy	20
9	Risk management, insurance and liability.....	20
10	Indemnity.....	21
	Appendix A Horizon Power Supply Areas	22
	Appendix B Application Form.....	23
	Appendix C Revision Information	25

1 PURPOSE

This Policy defines the technical requirements of CCTV, decorative fixtures, fittings, signs, banners and artwork on or attached to Horizon Power Assets. The Assets considered by this Policy are Poles, Ground Mounted Equipment and Power Stations. This Policy does not cover Vehicle Assets and depots or offices.

The Applicant of any Modification Works must accept full responsibility for ensuring that all the relevant requirements of this Policy are met.

2 APPLICATION

Written approval must be obtained from Horizon Power for any Modification Works, within the scope of this Policy, prior to any works commencing on a Horizon Power Asset. All applications must be made to the Retail and Community Manager for the district within which the relevant Asset is located. Horizon Power's districts are detailed in the table below.

West Kimberley 2 - 4 McDaniel Rd Broome WA 6725 PO Box 345 Broome WA 6725 Ph: (08) 9192 9900 Fax: (08) 9192 9901	Gascoyne and Mid West Corner Iles Rd & Robinson St Carnarvon WA 6701 PO Box 825 Carnarvon WA 6701 Ph: (08) 9941 6299 Fax: (08) 9941 6201
Esperance and Southern Goldfields 143 Sims Street Esperance WA 6450 PO Box 148 Esperance WA 6450 Ph: (08) 9072 3400 Fax: (08) 9072 3401	East Kimberley Lot 228 Messmate Way Kununurra WA 6743 PO Box 916 Kununurra WA 6743 Ph: (08) 9166 4700 Fax: (08) 9166 4720
East Pilbara 18 Anderson St Port Hedland WA 6721 PO Box 314 Port Hedland WA 6721 Ph: (08) 9173 8281 Fax: (08) 9173 8222	West Pilbara Stovehill Road Karratha WA 6714 PO Box 817 Karratha WA 6714 Ph: (08) 9159 7250 Fax: (08) 9159 7288

For details of the towns please refer to the map contained in Appendix A.

Applications can be made by completing the form at Appendix B of this Policy entitled *Application to install Modification Works on Horizon Power Assets* (CS10# 1433799).

This Policy addresses only the technical requirements associated with the application of any Modification Works to one or more of Horizon Power's Assets. The process for management of any other works, graffiti and non-approved artwork, including work contracts, is beyond the scope of this Policy.

Horizon Power reserves the right to modify or change this Policy without notice and cancel any approval granted for the Modification Works, to the extent limited by standing agreements. The Asset concerned will be replaced or repaired as required by Horizon Power and as a result the permanency of the Modification Works cannot be guaranteed.

It is the Applicant's responsibility to ensure that they have the latest version of this Policy.

Other factors not covered by this Policy may preclude the fixing of any unauthorised Attachment to Horizon Power Assets.

3 DEFINITIONS

3.1 General

Applicant	Any organisation or individual requesting permission to attach Modification Works to one or more of Horizon Power's Assets.
Application	Means a completed application in the form of the document at Appendix B.
Approvals	Any certificates, licences, consents, permits, approvals, authority, exemption, waiver or requirements of any Law.
Approved Works	Extent of the Modification Work that is formally approved in writing by Horizon Power under this Policy.
Asset	Includes Poles, MPS, Non MPS, RMUs and Power Stations.
Attachment	Is any decorative fixture, fitting, sign, Banner, Electrical Attachment or artwork fixed or to be fixed to an Asset which is not owned by Horizon Power.
Authorised Switching Operator	Means a person who has been authorised by Horizon Power to perform switching on the Network.
Banner	A banner is a sign that identifies and or promotes a non-profit service, event or activities for community information or benefit or for licensed charities.

Claim	<p>Means a demand, action or proceeding of any nature whether actual or threatened and includes any claim for payment of money (including damages):</p> <ul style="list-style-type: none"> • under, arising out of, or in any way in connection with, the Approved Works or the Modification Works; • arising out of, or in any way in connection with a party's obligations under this Policy; or • arising otherwise under any Law or in equity including: <ul style="list-style-type: none"> • by statute; • in tort for negligence or otherwise, including negligent misrepresentations; or • for restitution.
Contractor	<p>Contractor who holds a current Electrical Contractors Licence. Or a Contractor otherwise approved by Horizon Power to carry out work on or near Horizon Power Assets.</p>
Electrical Attachment	<p>Is any Attachment with an electrical circuit.</p>
Enclosure	<p>Any Horizon Power Asset used to house other Horizon Power equipment.</p>
Government Agency	<p>Means any government or governmental, semi- governmental, administrative, fiscal or judicial body, department, commission, authority, tribunal, government Minister, agency or entity.</p>
Graffiti	<p>Any Attachment NOT approved in writing by Horizon Power.</p>
Ground Mounted Equipment	<p>Means any equipment that is owned and operated by Horizon Power including and not limited to Modular Packaged Substations, Non Modular Packaged Substations, Low Voltage Frames and Ring Main Units.</p>
Intellectual Property Rights	<p>Means all intellectual and industrial property rights, including trademarks, copyright (including future copyright), inventions, patents, designs, circuits and other eligible layouts, database rights, and other intellectual property rights as defined in Article 2 of the <i>Convention establishing the World Intellectual Property Organization</i> dated 14 July 1967 (as amended from time to time), including any application or right to apply for registration of any of these rights.</p>
Job Risk Assessment	<p>A job risk assessment is a technique that focuses on job tasks as a way to identify hazards before they occur.</p>
Law	<p>Means all laws from which legal rights and obligations arise including legislation, regulations and any other requirements of Government Agencies.</p>

Loss	Means any loss, claim, action, liability, damage, cost, charge, expense, diminution in value or deficiency of any kind or character that a party pays, suffers, incurs or is liable for.
Modification Works	Is any Attachment fixed to or to be fixed to an Asset which is owned by Horizon Power.
Moral Rights	Means the rights conferred on authors of works by Part IX of the <i>Copyright Act 1968</i> (Cth).
Personnel	Means a party's officers, employees, directors, delegates, subcontractors, partners, agents and service providers of any nature.
Point of Supply	As defined in the <i>WA Electrical Requirements</i> , the junction of the consumer mains with the network operator's distribution network.
Pole	A Horizon Power Asset used for the support of aerial network equipment.
Policy	Means this Policy entitled 'Third Party Attachments to Horizon Power Assets' as updated or amended from time to time.
Service Protection Device	As defined in the <i>WA Electrical Requirements</i> , the junction of the consumer mains with the network operator's distribution network.
Streetlight Column	A Horizon Power Asset used for the support of streetlights only.
Transmission Poles	Assets used for the support of the transmission aerial network (≥ 66 kV). Transmission Assets may be co-located with transmission and distribution Assets.
Third Party	Means a person not being Horizon Power or the Applicant or a director, officer or employee of either Horizon Power or the Applicant.
Vehicle Asset	Means a vehicle Owned or Hired by Horizon Power.
Vicinity Authority Permit	A written authority from Horizon Power giving the Applicant's Personnel access to work in the vicinity of a Horizon Power Asset.

3.2 Abbreviations

AS/NZS	Australian Standards/New Zealand Standards
LVABC	Low Voltage Aerial Bundled Conductor

MPS	Modular Packaged Substation is a ground base transformer complete with the low voltage and/or high voltage switchgear is housed in a single package.
Non MPS	Non Modular Packaged Substation is a combination of one or more transformers Low Volt and/or High voltage switchgear as required each item housed in a separate self-contained metal enclosure.
RMU	Ring Main Unit is a ground mounted switching system and fusing system used in a distribution system.

3.3 References

AS 1742.5	Street name and community facility name signs
AS/NZS 3000	Wiring Rules
AS/NZS 3100	Approval and test specification—General requirements for electrical equipment.

3.4 Interpretation

In this Policy:

- a) headings and bold type are for convenience only and do not affect the interpretation of this Policy;
- b) unless the context otherwise requires, words importing the singular include the plural and vice versa;
- c) an expression importing a natural person includes any company, partnership, joint venture, association, corporation or other body corporate and any Government Agency;
- d) a reference to a statute includes all statutes amending, consolidating or replacing it, and a reference to a statute includes all regulations, proclamations, ordinances and by-laws issued under that statute;
- e) a reference to a body (including, without limitation, an institute, association or authority), whether statutory or not:
 - i) which ceases to exist;
 - ii) whose powers or functions are transferred to another body, or
 - iii) is a reference to the body which replaces it or which substantially succeeds to its powers or functions; and
- f) specifying anything after the words 'include' or 'for example' or similar expressions does not limit what else is included.

4 SAFETY AND WORK SKILLS

4.1 General

Horizon Power is committed to the philosophy that all accidents are preventable. All work is to be conducted in a safe manner. A task must cease if the safety of the people performing the work, Horizon Power personnel or the public cannot be assured.

In the execution of the Approved Works the Applicant must ensure the following:-

- a) personnel wear protective equipment (e.g. gloves, clothing (high visibility vests), footwear, safety glasses and helmets) as detailed in Horizon Power's standard for Personnel Protective Clothing (available on request through the relevant regional depot); and
- b) have a documented Job Risk Assessment for the Approved Works.

Further to the requirement detailed above, Horizon Power may require the Applicant to:

- c) apply for the Vicinity Authority Permit prior to commencement of Approved Work;
- d) have a Horizon Power observer at the Asset during any Approved Work;
- e) conduct a polarity test on the Asset; and
- f) perform all work off-site and have the equipment installed by Horizon Power or a Horizon Power approved Contractor.

Only Authorised Contractors may undertake work in accordance with this Policy. A list of Authorised Contractors is available on request through the relevant regional depot.

4.2 Qualifications requirements

All personnel that are engaged for the Modification Works other than those identified in section 7 are required to:

- a) hold a current Western Australian 'A' grade Electrical Workers License and work under the supervision of an approved Contractor or Horizon Power;
- b) be an approved Horizon Power Contractor with the necessary skills and competency to carry out the Approved Works; and
- c) be licensed to operate an Elevated Work Platform to WorkSafe Western Australia requirements if the Modification Work is to be fixed 1.8 metres above ground level.

4.3 Compliance with acts, codes and standards

All contractors that are engaged to perform any work installing or removing Modification Works are required to comply with all applicable Laws including, without limitation, the following:

- a) *The Occupational Safety and Health Act 1984 (WA) and Occupational Safety and Health Regulations 1996 (WA).*

- b) *Road Traffic Act 1974 (WA)* and Police Department requirements for traffic control, in conjunction with the Horizon Power Field Instruction 2.15 *Temporary Safety Barriers and/or Warning Signs* (available on request through the relevant regional depot).
- c) *EnergySafety – Code of Practice for Personnel Electrical Safety for Vegetation Control Work Near Live Power Lines*. All aerial work must be carried out from an Elevated Work Platform. Ladders or anything that will add load to a Pole or Streetlight Column must not be placed against any Poles or Streetlight Column.
- d) Horizon Power's *Safety and Health Management System Principle 6 – Contractors and Suppliers* which is available on request through the relevant regional depot

5 PROCESS

- a) The Applicant must forward the following documentation to Horizon Power:
 - A suitable representation of the intended Modification Work to allow Horizon Power to assess the Application. This may be in the form of a sketch, worded description or photograph(s) of similar modifications.
 - A letter endorsing the Modification Work by the Local Government Authority and/or other appropriate governing bodies e.g. School or community facility, etc.
 - A suitable detailed description of the Asset to which the Attachment will be fixed e.g. exact location, type etc. to allow Horizon Power to precisely identify the Asset and confirm Horizon Power's ownership of the Asset.
 - Written acknowledgment that the requirements of this Policy have been understood and have been / will be complied with.
- b) The Applicant is responsible for maintaining a record of correspondence relating to the approval of the Application.
- c) Written approval must be obtained from Horizon Power for each and every proposed Modification Work within the scope of this Policy.
- d) The Modification Work may not deviate from the design in the Application approved by Horizon Power without the prior written approval of Horizon Power. Any proposed changes to the Modification Work must be forwarded in writing to Horizon Power for approval at least ten days prior to the proposed works commencing.
- e) Horizon Power reserves the right to approve, approve with conditions or reject any Application.
- f) The Applicant may be responsible for costs incurred by Horizon Power in the assessment of the Attachment the subject of the Application where special investigation for suitability is required e.g. multiple Attachments. Horizon Power must advise the Applicant of these costs prior to any works being undertaken.

6 GENERAL REQUIREMENTS

6.1 General requirements

All Modification Works on Horizon Power Assets must comply with the following conditions:

- a) Where the Modification Work is fixed to an Asset from the ground, the Modification Work must not extend more than 1.8 metres above ground level.
- b) Where the Modification Work is to be applied to an Enclosure, it must not obstruct ventilation or doors from opening.
- c) The Modification Work must not obscure any other signage (such as Pole detail disks, Pole danger plates or fire hydrant location signs), identification labels or any other authorised markings on the Pole or Enclosure. Any Modification Works must be attached at least 20 mm from any markings to aid visibility of the markings.
- d) Modification Works must not be attached to Poles identified by Horizon Power as being unsuitable for use or due for replacement. It is the Applicant's responsibility to confirm the suitability of the Asset with Horizon Power.
- e) In the event that the Modification Work is found to contravene road safety, the Applicant is responsible for removing the Modification Work and restoring the Asset to Horizon Power's satisfaction.
- f) Any damage to a Horizon Power Asset caused by the Modification Works must be immediately reported to Horizon Power. Failure to report the damage will result in the approval in relation to the Approved Works being withdrawn. Any repairs carried out by Horizon Power will be at the Applicants' expense.
- g) Where it can be proven beyond reasonable doubt that the presence of the Modification Work has caused vandalism to Horizon Power's assets, the Applicant is liable for costs associated with the replacement or repair of Horizon Power's assets. An example of this would be the case where wilful damage is visible both on the Modification Work and on Horizon Power assets on the same structure, inflicted at the same time.
- h) Horizon Power reserves the absolute discretion to refuse any Modification Work that may be perceived by any community group as offensive or increases the probability of damage to Horizon Power Assets from vandalism.
- i) Fixing any Modification Work to Horizon Power Assets is to be done in a manner that does not damage the Asset in any way. Modification Work must not be fixed to Streetlight Columns by welding.
- j) Modification Works that protrude from an Asset must not:
 - i) be fitted less than three metres from ground level and below any existing street name signs;
 - ii) interfere with or obstruct any of Horizon Power's existing equipment and/or signage;

- iii) have modifications that protrude less than three meters from ground level; and
- iv) restrict operation of any switching devices or general access to Assets.
- k) Where Modification Works are to be located on Streetlight Columns, all corners must be rounded and there must be no sharp edges exposed.
- l) Modification Works must be securely fixed so as to not constitute any hazard to the public or Horizon Power employees. Horizon Power may require the Applicant to refix or remove any or all Modification Works that in Horizon Power's view restricts access or poses a hazard
- m) Modification Works are not permitted on Poles that support transformers, switchgear, cables or similar operational equipment as determined by Horizon Power.
- n) Horizon Power offers no guarantee that Assets to which Modification Works are fixed will remain in their existing locations or configurations. When in Horizon Power's view removal or relocation of an Asset renders the Modification Works unsuitable, the Applicant is responsible for identifying suitable alternatives and for any associated costs.
- o) Good quality material must be used in any Modification Works. All material must be:
 - Stable and non-reactive up to a temperature of 85°C;
 - Non-toxic;
 - Rust proofed;
 - Non-hazardous; and
 - Non-detrimental to Horizon Power's Asset.
- p) If a Pole with Modification Works is moved, removed or modified to support equipment as per above, Horizon Power reserves the right to instruct the Applicant to remove the Modification Work at the Applicant's cost or remove the Modification Work and return it to the Applicant's last known address. Horizon Power will endeavour to contact the Applicant, where a contact number is given on the Modification Work, but does not guarantee that it will contact the Applicant when the Modification Work is removed.
- q) A contact phone number for the Applicant of the Modification Works is to be provided indelibly on the Modification Work.
- r) A Vicinity Authority Permit must be obtained from Horizon Power if a Modification Work is to be fixed to an Asset enclosing or supporting energised Assets. Supervision by Horizon Power may be required at Horizon Power's absolute discretion. The Applicant is responsible for the cost of any supervision by Horizon Power.
- s) The Applicant is to maintain the Modification Work in good order by way of regular inspection and repair.
- t) The size, location and type of Modification Work must not be distracting to vehicle drivers and must not be obstructive or disturb the general ambience of the local community.

- u) Nothing (including ladders or other equipment) may be placed or leaned against any Horizon Power assets.
- v) Where a Modification Work requires an Asset to be modified, a structural analysis is required (at the Applicant's cost) to ascertain that the Asset is capable of supporting the Modification Work. Design calculations and all records of the Modification Work must be supplied to Horizon Power.
- w) Where an Attachment is to be installed on an Asset then an engineer's report is required detailing the size of the Attachment and the wind loading of the design.

6.2 Recommended pole types

It is recommended that Modification Works are attached to intermediate or termination distribution poles. Street light poles with nominal luminaire mounting heights of 10.5 and 12.5 m, and have a single outreach, are also recommended.

For Decorative Fixtures, the distribution pole may carry LV only, or both LV and HV, or HV only.

For Electrical Attachments, the distribution pole may carry LV only, or both LV and HV, but poles that carry HV only are not suitable.

The LV may be either open-wire (identifiable as four spaced uncovered conductors) or LVABC (identifiable as a single insulated cable). HV is identifiable as three spaced uncovered conductors.

6.3 Steel lattice towers

Modification Works are NOT permitted on steel lattice towers. Examples of transmission poles and structures are provided in Figure 1.

6.4 Transmission poles

Modification Works are NOT permitted on transmission Poles. Examples of transmission poles and structures are provided in Figure 1.

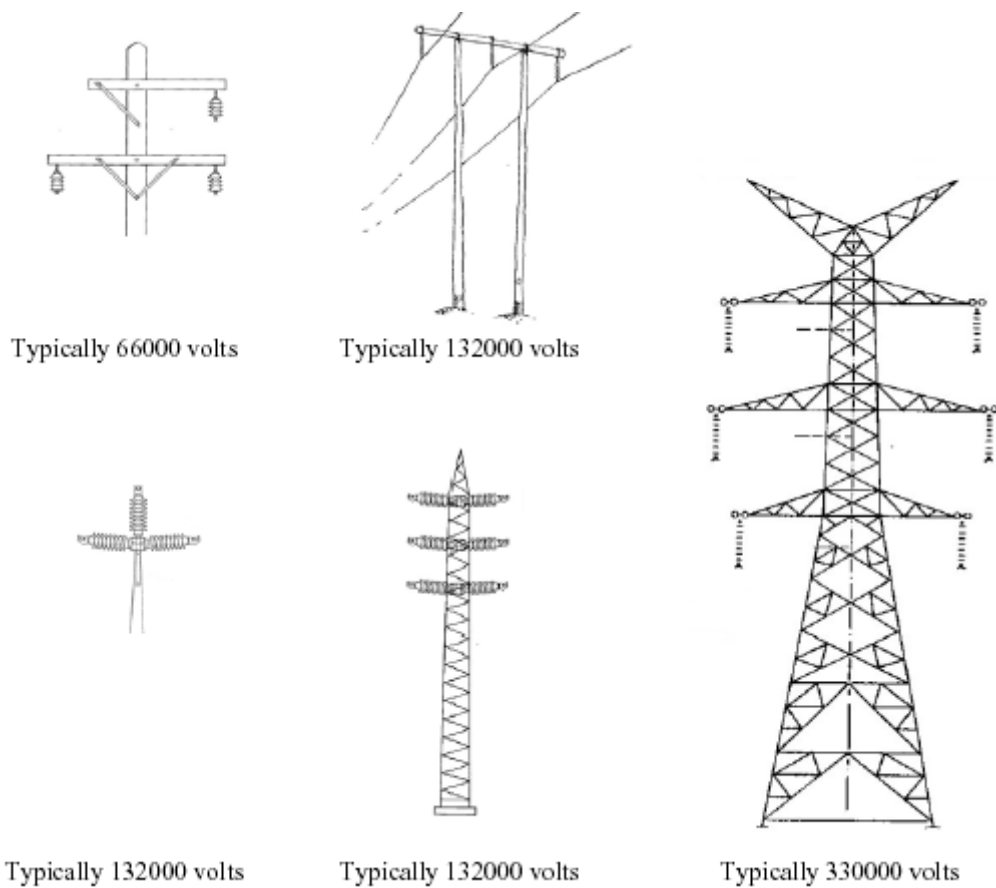


Figure 1 Examples of transmission poles and structures

6.5 Reinforced and condemned assets

Modification Works are NOT permitted on Assets that have been reinforced, or assessed as condemned.

6.6 Aerial equipment poles

Modification Works are NOT permitted on Poles that have equipment such as transformers, pole-top switches, power correction devices, and cable termination poles.

Examples of Poles with mounted equipment are provided in Figure 2.

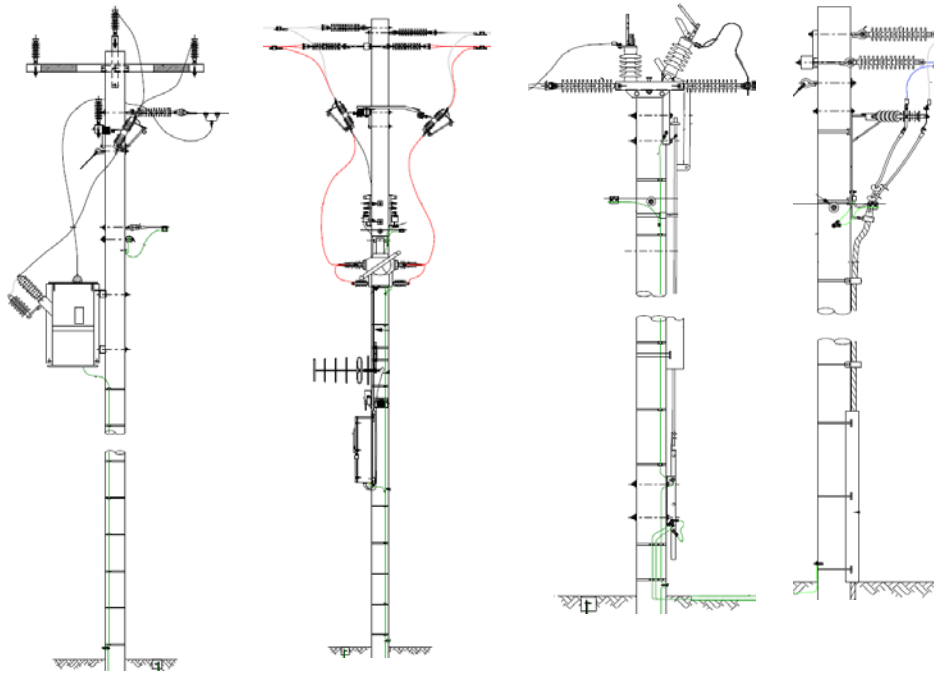


Figure 2 Examples of poles with equipment

6.7 Other pole types

Modification Works are NOT permitted on Poles where conductors terminate from two directions (see Figure 3), or running disc angle (see Figure 4).

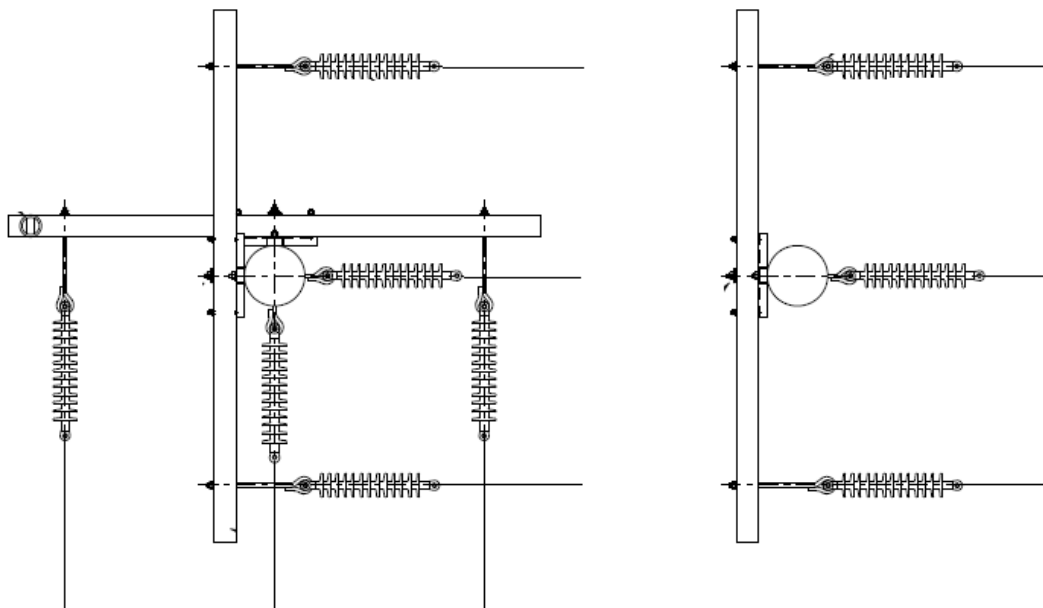


Figure 3 Examples of poles with conductor terminations (view shown from above)

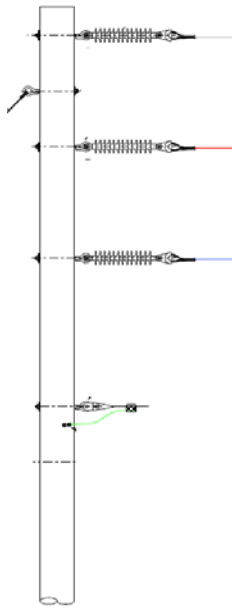


Figure 4 Example of 'running disc angle' pole

6.8 Other approvals

Applicants are responsible for obtaining any Approvals required by Law for any Modification Work.

6.9 Enclosures kiosks/MPS/RMUs

Horizon Power may approve enclosures which may be prepared and have approved Modifications Works applied off-site prior to installation. All costs incurred under these arrangements are the responsibility of the Applicant.

7 DECORATIVE FIXTURES

7.1 General requirements

All Decorative Fixtures on Horizon Power Assets must comply with the following conditions:

- a) Decorative Fixtures containing political statements, offensive material, religious content, commercial artwork or any statement which may advantage or disadvantage one business or group over another must NOT be located on Horizon Power Assets.
- b) Preference may be given to Decorative Fixtures following a nature, environmental or community theme, such as landscapes, animals etc.
- c) Decorative Fixture must not contain hidden messages.
- d) All Decorative Fixture must have the words "APPROVED BY LOCAL COUNCIL", in approximately 20 mm high lettering in a visible colour, applied at the bottom right hand corner of the Attachment (or 100 mm from base of pole).

- e) Horizon Power will not be liable for any cost associated with the Decorative Fixture, or for any loss or damage to the Decorative Fixture, which may occur during maintenance, repairs or replacement of Horizon Power's Asset.
- f) If the Decorative Fixture deteriorates to the extent that Horizon Power decides (in its absolute discretion) that it is no longer in the community interest or detrimental to the condition of the Asset, Horizon Power may cover or remove the Decorative Fixture at the Applicant's expense. Horizon Power will notify the Applicant in writing of any action it takes under this clause.
- g) Signs indicating direction such as street names and community facility name signs may extend from the Pole or Streetlight Column to achieve that purpose. The shape, size and mounting height of such signs must comply with AS 1742.5.
- h) Where Decorative Fixtures that do not indicate directions (such as fire hydrant, Safety House and Neighbourhood Watch signs) are located on Poles, they are to be wrapped around the Pole and fixed to prevent protrusion of sharp corners. These must not cover up or obscure any Horizon Power identification numbering or associated signage. Wrapped signage must not be placed around the immediate base of the Pole as Horizon Power requires access to the Pole base in order to carry out Pole inspections.
- i) If a Pole with Decorative Fixtures is moved, removed or modified to support equipment as per above, Horizon Power reserves the right to instruct the Applicant to remove the Decorative Fixture at the Applicant's cost or remove the Decorative Fixture and return it to the Applicant's last known address. Horizon Power will endeavour to contact the Applicant, where a contact number is given on the Decorative Fixture, but does not guarantee that it will contact the Applicant when the Decorative Fixture is removed.
- j) The Modification Work must not be deemed to create cultural significance and can be removed at Horizon Power's absolute discretion at any time.

7.2 Modifications - signage

The following signs are approved for use on Horizon Power's steel, wooden and concrete Poles and steel Streetlight Columns.

- Safety house signs;
- School signs;
- Neighbourhood watch signs;
- Street Name signs;
- Bus routes signs; and
- Fire hydrants signs.

7.3 Other signs - wooden poles:

Horizon Power may consider other signs for placement on wooden poles however they must comply with the requirements of sections 6.1 and 7.1.

7.4 Other signs – steel street light columns:

No signage is permitted on Horizon Power's steel street light columns, other than those indicated in section 7.2.

7.5 Pole to pole banners

Pole to Pole Banners are NOT permitted on Horizon Power Assets.

Banners must NOT be attached on or between Assets or make use of a Horizon Power Poles or Streetlight Columns to support one end of a Banner.

8 ELECTRICAL ATTACHMENTS

8.1 General

Only CCTV cameras and their associated communications infrastructure are currently allowed under this policy.

8.2 Location

The lowest point of the Electrical Attachment must be at least 4 m above finished ground level.

The highest point of the Electrical Attachment must be at least 1.2 m away from LV conductors, and at least 2.2 m away from HV conductors. These minimum distances are measured vertically.

8.3 Poles

Electrical Attachments may be installed only on Poles:

- Distribution poles carrying intermediate HV and LV
- Distribution poles where HV and LV terminate
- Distribution poles carrying intermediate LV
- Distribution poles where LV terminates
- Streetlight poles with a single outreach, of nominal luminaire mounting height 10.5 m and 12.5 m

In addition, Electrical Attachments may not be installed on Poles to which Decorative Fixtures are already attached.

8.4 Physical mounting

The Electrical Attachment must only be attached by the following means:

- a) For concrete and steel poles, by stainless steel band-it straps
- b) For wooden poles, by band-it straps or coach screws

8.5 Electrical isolation and protection

Horizon Power will provide a drawing indicating the Point of Supply and network-owned service protection device (SPD), housed within a connection box.

Installed equipment must be isolated and earthed for people to work on. Isolation and earthing must be carried out by Authorised Switching Operators only.

8.6 Device class

Devices may be either Class I or Class II as defined by AS/NZS 3000 *Wiring Rules*.

8.7 Wiring

Wiring between the connection box (supplied and installed by Horizon Power) is Consumer Mains and must be designed and installed in accordance with AS/NZS 3000 *Wiring Rules*.

8.8 Wiring conduit

The wiring between connection box and Electrical Attachment must be enclosed in flexible conduit that complies with AS 2053.4.

8.9 Stored energy

Where Electrical Attachments create or store energy (e.g. photovoltaic panel or backup battery), the design of the device must prevent this energy from energising the mains electricity supply.

9 RISK MANAGEMENT, INSURANCE AND LIABILITY

Horizon Power requires the Applicant to have the following insurances and provide satisfactory evidence of the currency of the policies before commencing any work for an Attachment on an Asset.

Insurance Policies for:

- a) Public Liability which:
 - i) covers all liability to any Third Party for death, injury and loss or damage to people or property caused by or attributable to the Approved Works for a limit of not less than \$20 million;
 - ii) notes Horizon Power's interest;
 - iii) includes cross liability and waiver of subrogation endorsements; and
 - iv) has an advertising liability extension.
- b) Workers Compensation insurance against any Claim in respect of any personal injury to or death of any person employed or engaged by the Applicant which arises out of, or is caused or contributed to by, the performance or non-performance of the Applicant or an agent or employee of the Applicant:
 - i) at common law and for breach of any Law; and
 - ii) for any compulsory statutory workers' compensation benefits or other liability under the Workers' Compensation and Injury Management Act 1981 (WA) or other applicable Laws.
- c) Voluntary Workers Personal Accident Insurance - Covering all non-paid persons who will be engaged in the Approved Works.

- d) Motor Vehicle Third Party property insurance - covering all loss or damage to property of any Third Party caused by or attributable to the use of a motor vehicle in the Approved Works for a limit of not less than \$20 million.

The Applicant must consider road safety and protection of the work site while undertaking the Approved Works – particularly when undertaking the Approved Works on or near roadways. Applicants are referred to WorkSafe’s website for further information – www.commerce.wa.gov.au/worksafe/

All of the above insurance information must be included in the written application.

If the Applicant subcontracts the whole or any part of the Approved Works, then the Applicant must cause the subcontractor to be insured as specified above in clause 9.

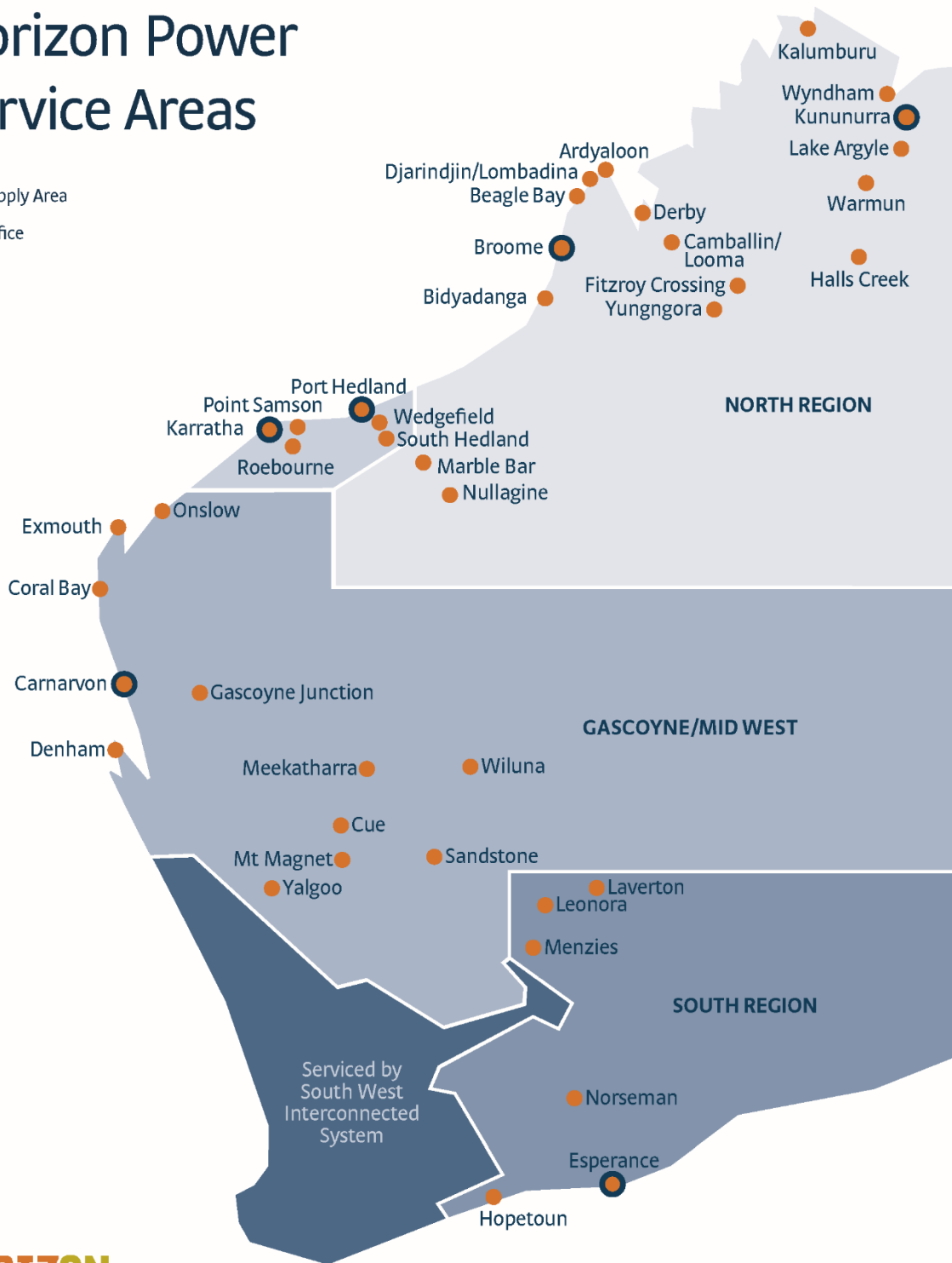
10 INDEMNITY

- a) The Applicant indemnifies Horizon Power and Horizon Power’s Personnel against any Loss and Claims suffered or incurred by Horizon Power or Horizon Power’s Personnel in connection with any act or omission by the Applicant or the Applicant’s Personnel arising from, or in connection with, the Approved Works, the Modification Works and the performance or non-performance of the Applicant’s obligations under this Policy, including any:
- i) breach of the Applicant's obligations under this Policy.
 - ii) tort, including negligence or breach of an Act or Authorisation; and
 - iii) breach of equitable duty, including breach of confidentiality or breach of fiduciary duty.
- b) The Applicant further indemnifies Horizon Power and Horizon Power’s Personnel against any Loss and Claims suffered or incurred in connection with any Claim by a Third Party against Horizon Power or Horizon Power’s Personnel arising from or in connection with the performance or non-performance of the Applicant’s obligations under this Policy including any:
- i) breach of Law;
 - ii) tort, including negligence or breach of a Law;
 - iii) breach of equitable duty; or
 - iv) Claim by a Third Party that its Intellectual Property Rights or Moral Rights have been infringed.
- c) The Applicant performs its obligations under this Policy at the Applicant’s sole risk, and to the extent permitted at Law, Horizon Power will not be liable to the Applicant, the Applicant’s Personnel, or any Third Party for any Loss sustained by any person or to any property, howsoever caused, arising out of or in connection with the Approved Works, the Modification Works or this Policy, except as arising out of or as a result of negligence or a breach of contract by Horizon Power or Horizon Power’s Personnel.

APPENDIX A HORIZON POWER SUPPLY AREAS

Horizon Power Service Areas

- Supply Area
- Office



APPENDIX B APPLICATION FORM



Application to install modification works on Horizon Power assets

Modification details

Type of modification

Artwork

Attachment type: Sign label Camera Other

Asset ID number and location

Asset ID number Asset location (Street, Suburb, House number)

Note: Technical details for the proposed works is to be provided as an attachment to this form.

Applicant details

Surname: Given name:

Business name: ABN:

Address:

Daytime phone number: Email:

Works period: Start date:

Signature: Application date:

By signing this Application I acknowledge that I have read and understood the Standard entitled 'Third Party Attachments to Horizon Power Assets' and agree to be bound by its terms including the indemnity and insurance provisions.

Horizon Power office use

Attachment approves: Yes/No Applicant notifies: Yes/No copy scanned into DM: Yes/No

CCRM signature: Date:

Technical Information

Artwork Details

Length (cm): Width (cm): Materials to be used:

Description:

Sign/Label Detail

Length (cm): Width (cm): Weight (kg):

Materials to be used:

Camera

Type: Manufacturer:

Model: Number of units:

Length (cm): Width (cm): Depth (cm): Weight (kg):

Power Supply Make: Model:

Length (cm): Width (cm): Depth (cm): Weight (kg):

Wireless Interface Make: Model:

Length (cm): Width (cm): Depth (cm): Weight (kg):

Attachment total power (Watts):

Other

Description:

Purpose:

List of items

Items: Manufacturer: Model:

Length (cm): Width (cm): Depth (cm): Weight (kg):

Sketch and/or engineering report to be attached.

APPENDIX C REVISION INFORMATION

(Informative) Horizon Power has endeavoured to provide standards of the highest quality and would appreciate notification of errors or queries.

Each Standard makes use of its own comment sheet which is maintained throughout the life of the standard, which lists all comments made by stakeholders regarding the standard.

A comment sheet found in **CS10# 4179103**, can be used to record any errors or queries found in or pertaining to this standard. This comment sheet will be used when the standard is periodically reviewed and updated.

Date	Rev No.	Notes
09/03/2011	1	Approved for use in Horizon Power
22/06/2016	2	Reformatted, updated referenced documents, changed standard number from A02-00-PG-0145-2011 to HPC-11NH-18-0001-2011
30/03/2017	3	Amended to allow Electrical Attachments