

WHY SHOULD MY TREES BE TRIMMED?



Trees or branches touching powerlines are one of the main causes of power interruptions and may cause fires and or other serious accidents.

Horizon Power encourages the planting of the right tree in the right place. Unfortunately, many trees are planted, or have naturally grown, too close to powerlines and need to be trimmed.

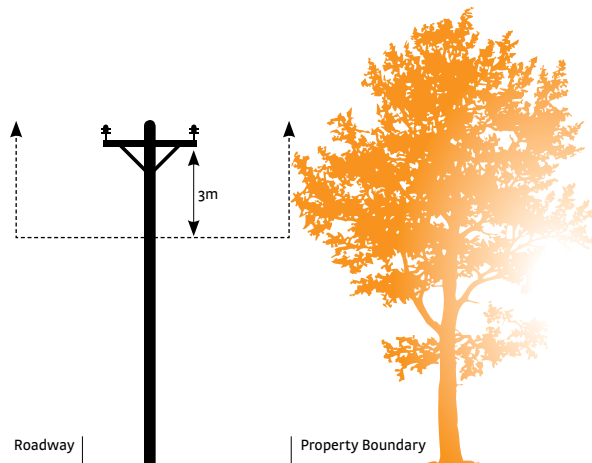
Failing to trim your trees can lead to accidents, which may happen when:

- A person climbs a tree and touches live wires;
- Heavy branches break powerlines that fall to the ground while still live;
- A branch touches a powerline, causing a spark and resulting in a fire; and
- They touch powerlines, causing a power surge that may affect household equipment and appliances.

In unusual circumstances, trees may even become live if they touch powerlines and may cause anyone touching the tree to experience an electric shock.

Horizon Power regularly inspects powerlines to identify where vegetation is growing too close.

The following diagram shows the minimum clearance zone. As a general rule, trees should be no closer than **three metres** to powerlines.



WHEN DO TREES NEED TO BE TRIMMED?

Trees should always be trimmed if they are too close to powerlines. In the north of Western Australia, trees should also be trimmed before the summer cyclone season (November-April). Trees in the Midwest and southern parts of the State should be trimmed before winter, in May.

HORIZON
POWER

Report any electrical incidents or faults immediately to Horizon Power by telephoning **13 23 51**.

Dial **000** in emergency situations.

www.horizonpower.com.au

Document is available in alternative formats



WHO SHOULD TRIM TREES?

If the trees at your home need to be trimmed, Horizon Power strongly recommends that you hire a professional tree contractor as they have the correct training and experience to carry out the work. Tree trimming can be dangerous for inexperienced, or improperly trained people. Anyone trimming trees near powerlines should be aware of safe working clearances and compliance with safety zones.

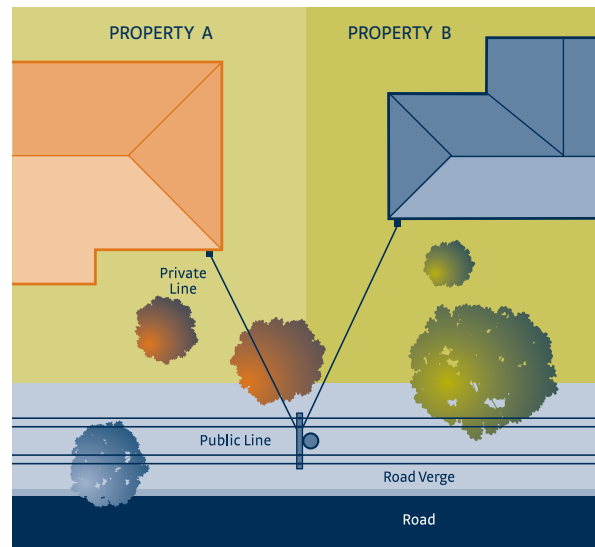
Check the Yellow Pages for local tree trimming contractors and be sure to check that they have current qualifications and insurances.

WHICH TREES AM I RESPONSIBLE FOR?

It is the resident's responsibility to trim trees on private property, even if they are not the home owner. You may want to check if this is covered in your rental agreement.

Local councils are generally responsible for trimming trees on urban street verges and road reserves.

If you see any damaged electrical infrastructure, such as a fallen powerline, stay clear and report it to Horizon Power on **13 23 51** so the damage can be fixed quickly and safely. In an emergency, dial 000.



As a guide, the trees coloured orange are the responsibility of the occupier of Property A; those coloured green are the responsibility of the occupier of Property B.

The tree planted on the verge (blue coloured tree) is the responsibility of the local council.