

DO YOU KNOW THE ELECTRICAL HAZARDS ON YOUR PROPERTY?



It is important that you know of all the electrical hazards on your property before starting any work.

Accidental contact with powerlines and other electricity infrastructure can cause damage, injury, even death. But simple precautions can help to keep you, your family and workers safe from electrocution.

In areas where an underground electricity network exists, make sure you:

- Know the location of all electrical infrastructure on or near your property;
- Do a visual check for electrical infrastructure; and
- If you plan to dig near or on the verge of your property, call 1100, Dial Before You Dig, to obtain a map of underground pipes and cables in your area.

Any work near an overhead electricity network must comply with WorkSafe legislation, including restrictions on working within the 'danger zone'* around powerlines.

To work safely:

- Check for overhead powerlines before starting work. If powerlines are located near the work area, confirm voltages and safety clearances by contacting your local Horizon Power office;
- Know the height and reach of any equipment you use and maintain safety clearances between this equipment and the powerlines;
- Use a safety observer when working to ensure you keep clear of the powerlines;
- Never interfere with electricity infrastructure or attach or tie anything to it; and

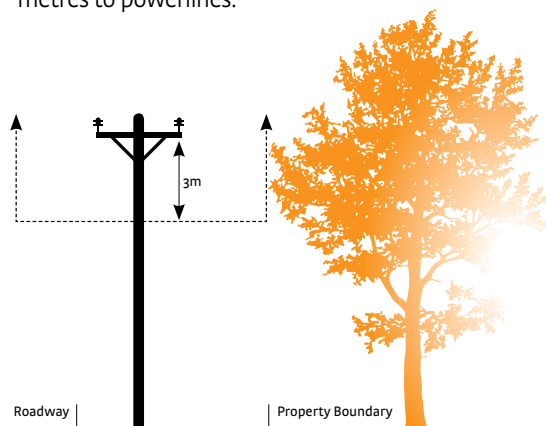
- If work requires a person to enter the 'danger zone'* as defined by WorkSafe, contact your local Horizon Power office to determine how the powerlines can be made safe.

VEGETATION MANAGEMENT

One of the main causes of power interruptions is trees or branches touching powerlines.

Trees should be trimmed whenever they are too close to powerlines. In the north of Western Australia, trees should also be trimmed before the summer cyclone season (November-April). Trees in the Midwest and southern parts of the State should be trimmed before winter, in May.

The diagram below shows the minimum clearance zone. As a general rule, trees should be no closer than three metres to powerlines.



HORIZON
POWER

Report any electrical incidents or faults immediately to Horizon Power by telephoning **13 23 51**.

Dial **000** in emergency situations.

www.horizonpower.com.au

Document is available in alternative formats



Land owners and occupiers are responsible for trimming trees and vegetation on their property. Local councils are generally responsible for trimming trees on urban street verges and road reserves.

If the trees on your property need to be trimmed, Horizon Power strongly recommends that you hire a professional tree contractor as they have the appropriate experience and training to carry out the work. Tree trimming can be dangerous for inexperienced or improperly trained people. Anyone trimming trees near powerlines should be aware of safe working clearances and compliance with safety zones.

Check the Yellow Pages for local tree trimming contractors and be sure to check that they have current qualifications and insurances.

AERIAL SPRAYING

Make sure you take into account the location of powerlines when planning the flight path of your aerial sprayer. Sprayers accidentally flying through and bringing down powerlines can cause power disruptions and serious injuries.

STUBBLE BURNING

To avoid fires causing danger or widespread damage while stubble burning, Horizon Power recommends that you:

- check for overhead powerlines before starting work (see above);
- clear vegetation from around the base of poles to at least 1.5 metres;
- wet timber pole bases thoroughly;
- do not rake wind-rows beneath or next to powerlines or poles;
- avoid stubble burning when weather conditions are not suitable; and
- check fires regularly.

ALTERNATIVE ENERGY SOURCES IN THE HOME

Property owners are increasingly recognising the benefits of alternative energy sources in the home. But great care must be taken when installing new sources such as solar panels or portable generators.

The installation of solar panels requires a high level of knowledge and skill and should only be done by people with the appropriate qualifications.

If using a portable generator at your home, do not connect it to the electrical wiring of your house or office unless a licensed electrical contractor has installed an isolating switch.

Never plug a generator into wall outlet as this creates a high risk of electrocution, not only on your property but also for neighbours using the same utility transformer.

When plugging in an appliance directly into a portable generator, read and follow the manufacturer's instructions to avoid malfunction.

Petrol and diesel generators should be operated outdoors and well away from open windows as they produce dangerous fumes.

If you see any damage to electrical infrastructure, such as a fallen powerline, stay clear and report it to Horizon Power on **13 23 51** so the damage can be fixed quickly and safely. In an emergency, dial 000.

** Under WorkSafe Regulation 3.64, the 'danger zone' is anywhere:*

- a. within 0.5 metres of a live insulated overhead powerline or aerial bundled conductor line of up to 1000 volts;*
- b. within 1.0 metre of a live uninsulated overhead powerline of a voltage of up to 1000 volts;*
- c. within 3.0 metres of a live overhead powerline, whether insulated or not, between 1000 and 33,000 volts; or*
- d. within 6.0 metres of a live overhead powerline, whether insulated or not, of more than 33,000 volts.*